



Maximum Performance



# LAUNDRY'S MOST VALUABLE PERFORMERS

UNIMAC.COM

UW45 & UW65 POCKET HARDMOUNT WASHER-EXTRACTORS

# LONGEST LASTING. HARDEST WORKING.

UniMac is the world's leading source of heavy-duty industrial laundry solutions. Our robust machines are designed to maximize throughput, minimize costs and deliver the best return on laundry investment.

How?

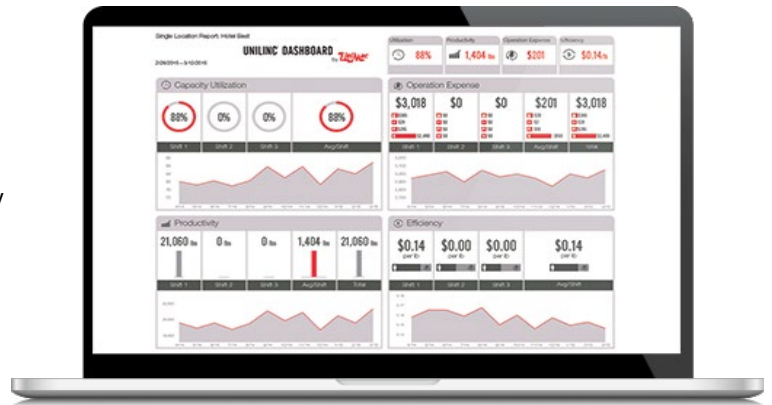
Your UniMac systems are backed by an extensive distributor and support network, as well as in-house financial solutions. And as a part of Alliance Laundry Systems, UniMac provides exceptional service and attention to detail, backed by the capacity and strength of the world's leading laundry manufacturer .



Proudly based in Ripon, Wisconsin, USA, UniMac is dedicated to research, development and testing to provide equipment that delivers industrial strength and long-lasting quality. Our products undergo a 5-stage product development process and are pushed beyond their limits in our state-of-the-art test lab to ensure they exceed the toughest demands of the commercial environment and meet our customers' highest standards.

# UNILINC™ + TOTALVUE™ = ONE COMPLETE SOLUTION

UniMac's total-solution approach is the answer to identifying inefficiencies and process breakdowns in order to improve operations. It all starts with UniLinc, which gathers and automatically records machine performance and maintenance data. TotalVue then compiles the information into easy-to-read, graphical reports that give you a real-time, at-a-glance view of the performance data that matters most. Best of all, TotalVue gives laundry managers the ability to establish goals for their operation and measure results against them. Only through setting goals and monitoring, can a laundry truly elevate its performance.



The results?

## INCREASED:

- Utilization
- Efficiency
- Throughput
- Flexibility & control
- Profitability

## DECREASED:

- Downtime
- Water & energy usage
- Labor expense
- Operational expense

UniLinc®

TotalVue™

## HIGHER PERFORMANCE. LOWER COST.

OPTispray is an industry-exclusive technology designed to reduce both the water and time necessary to complete a rinse cycle. Unlike bath rinses used by competitor brands, which simply dilute wash chemistry, OPTispray uses spray-rinsing power to pull wash chemistry through the load and down the drain. The spray rinse carries away dirt and chemicals, leaving less residue behind—and providing far superior rinse results.



OPTISPRAY



NORMAL  
RINSE

## THE OPTISPRAY ADVANTAGE<sup>1</sup>

39%

### WATER SAVINGS

Get a quality wash while using as much as 39% less water than competitor brands.

12%

### SHORTER CYCLE TIMES

Decrease cycle rinse times by up to 12%.

\$2,110

### LOWER UTILITIES

Save up to \$2,110 in yearly utilities compared to competitor brands.

22%

### BETTER RINSING

Leaves 22% less residual wash chemistry compared to the nearest competitor.

<sup>1</sup> Savings Assumptions: 10 loads/day x 365 days/year – Water rate \$5/1000 gal – Sewer \$5/1000 gal and 93% of incoming water goes to drain, 7% retained in load – Gas cost = \$1/therm, 75°F temp rise, 85% gas heater efficiency, and 65% of incoming water is heated using an external water heater (Local utility rates vary widely and groundwater temps vary by region; check your local data and adjust accordingly.)



**OUR UNILINC™  
CONTROLS ARE  
REVOLUTIONIZING THE  
WAY PEOPLE THINK  
ABOUT LAUNDRY**

- **SAVE WATER AND ENERGY**
- **INCREASE THROUGHPUT**
- **GAIN FLEXIBILITY AND CONTROL**
- **MONITOR YOUR LAUNDRY**
- **EASY TO USE**
- **WIRELESS NETWORKING**
- **48 PROGRAMMABLE CYCLES**



**UW HARDMOUNT  
WASHER-EXTRACTORS 45 AND 65LB**

SPECIFICATIONS		UW45		UW65			
Control Options		UniLinc™		UniLinc™			
Capacity - lb (kg)		45 (20)		65 (30)			
Cylinder Diameter - in (mm)		31 (787)		31 (787)			
Cylinder Depth - in (mm)		16.6 (422)		22.1 (561)			
Cylinder Volume - cu ft (liters)		7.3 (207)		9.7 (275)			
Height - in (mm)		64.7 (1643)		64.7 (1643)			
Width - in (mm)		34.1 (866)		34.1 (866)			
Depth - in (mm)		45.3 (1151)		51.1 (1298)			
Door Opening Size - in (mm)		17.8 (452)		17.8 (452)			
Door Bottom to Floor - in (mm)		28.8 (732)		28.8 (732)			
Motor Size - HP (kW)		5 (3.7)		5 (3.7)			
Total # of Speeds		L Sp	V Sp	L Sp	M Sp	V Sp	
		5	9	5	6	9	
*Cylinder Speed RPM ( G-Force)		Gentle	30 (0.4)	30 (0.4)	30 (0.4)	30 (0.4)	
		Wash	42 (0.78)	42 (0.78)	42 (0.78)	42 (0.78)	42 (0.78)
		Distribution	75 (2.5)	75 (2.5)	75 (2.5)	75 (2.5)	75 (2.5)
		Very Low	248 (27)	248 (27)	248 (27)	248 (27)	248 (27)
		Low	477 (100)	477 (100)	477 (100)	477 (100)	477 (100)
		Medium	—	674 (200)	—	674 (200)	674 (200)
		High	—	754 (250)	—	—	754 (250)
		Very High	—	826 (300)	—	—	826 (300)
Ultra High		—	954 (400)	—	—	954 (400)	
Drain Diameter - in (mm)		3 (76)		3 (76)			
Steam Connection - in (mm)		½ (13)		½ (13)			
Water Inlet Connection - in (mm)		4 @ ¾ (19)		4 @ ¾ (19)			
Shipping Dimensions - in (mm)		Width	37.2 (945)		37.2 (945)		
		Depth	53.8 (1370)		53.8 (1370)		
		Height	65 (1650)		65 (1650)		
Net Weight - lb (kg)		1080 (490)		1110 (499)			
Standard Shipping Weight - lb (kg)		1120 (508)		1150 (522)			
Slat Crate Shipping Weight - lb (kg)		1250 (567)		1280 (581)			
Agency Approvals		cULus		cULus			

\*All RPM and G-Force results are reliant upon wash load composition and incoming voltage.

**TO LEARN MORE OR TO FIND A DISTRIBUTOR IN YOUR AREA, VISIT UNIMAC.COM  
ALLIANCE LAUNDRY SYSTEMS - SHEPARD ST, RIPON, WI 54971 - 1.800.587.5458**

For the most accurate information, the installation guide should be used for all design and construction purposes. Due to continuous product improvements, design and specifications subject to change without notice. The quality management systems at Alliance Laundry Systems is registered to ISO 9001.